



SPRING SUMMER 2009

9

Campagnolo

CYCLING APPAREL

CAMPAGNOLO *11*

Campy
bike
.com





Campagnolo[®] is not merely a brand.



Campagnolo
CYCLING APPAREL

It's Always a perfect day!

For those who want to challenge the fury of the elements in total safety and discover both the pleasure of performance and the privilege of comfort. For those in search of breathtaking emotions who know how to enjoy the quietness during the storm. For those with heart, muscles and passion to spare. The four seasons will be neither too hot nor too cold.

Campagnolo Cycling Apparel Collection. Make yourself comfortable in the eye of the storm.

The Cycling Apparel collection brings together the universal all-time values of Campagnolo in a complete range of garments and accessories designed to improve performance and comfort for the keenest of cyclists. Garments and accessories with a wealth of top-level technical contents for an aware and demanding clientele who, quite rightly, expect only the absolute maximum.

And they get it.



Waterproof



Water-resistant



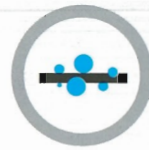
Windproof



Breathable



Hydrophobic



Moisture-absorbent



UV protection



Antibacterial



Odour control



MEN'S

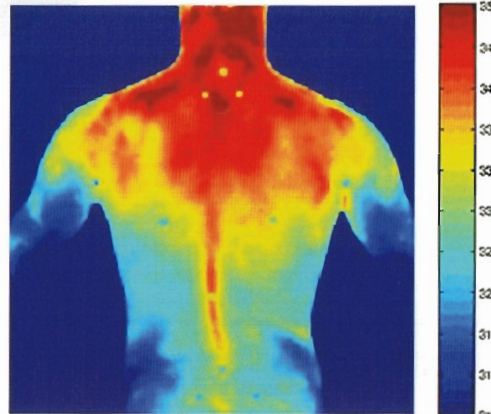
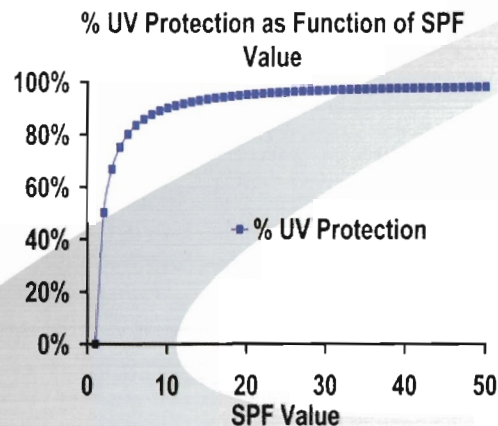
MEN'S RANGE SPRING SUMMER 2009 COLLECTION

Passion over and above everything else. The passion of those who cycle and those who study, design and produce garments that are a true technological concentrate of innovation, functionality and design.



SPEEDTM

The perfect blend of performance and comfort. Maximum transpiration where you need it most, keeping body temperature constant and wicking sweat away.



Maximum UV protection (SPF rating: 50+)

Perfect fit with all-round elastic support.

Maximum stretchability and rapid recovery provide ideal compression where you need it, improving performance and comfort without constraining the muscles. Giving you the freedom you need.



1. GLOVE C426 | 2. JERSEY C658 | 3. BIB C655 |
4. OVERSHOES C411 | 5. JERSEY C656 | 6. BIB C657



JERSEY C656 | BIB C657 | GLOVE C426 | OVERSHOES C411

11 SPEED™

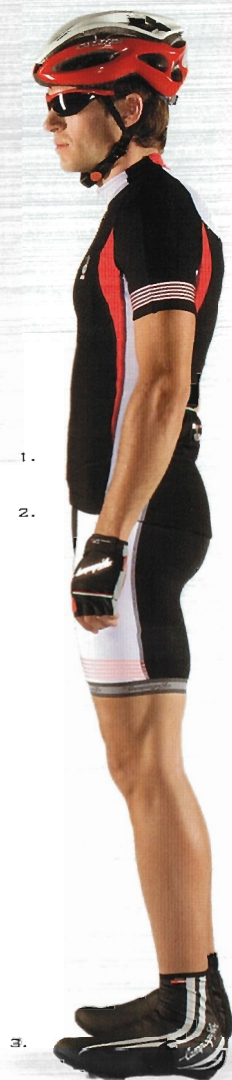
For those who wish to be unique, in a class of their own. Always.



RACING™

For those who love to take part. But would prefer to win.

Through storm and blazing heat, let the weather do its worst. Take up the challenge. Style is the privilege of the few. It's passion.



1.

2.

3.



4.

5.

6.

7.



1.

2.

new generation microfibre • perfect regulation body temperature •
breathable carbon fibre • techno lycra for correct muscle
compression and technical performance • mesh insert for constant
air circulation • high breathability • UV protection



1. JERSEY C647 | 2. BIB C644 | 3. OVERSHOES C740 | 4. SEAMLESS JERSEY C661 | 5. GLOVE C418 | 6. BIB C660 | 7. OVERSHOES C411

A man with dark hair and a focused expression is shown from the chest up, looking back over his right shoulder. He is wearing a black cycling jersey with blue accents on the sleeves and white stripes on the shoulder. The background is a dark, empty velodrome with tiered seating visible in the distance.

RAYTECH™

For those who love to go beyond their personal limits. And look good doing it.

Lashing rain, endless downpour.
Just get into the rhythm: concentrate,
breathe, push hard. Precision in
every move. Balance is key.



polypropylene lining that keeps the body dry • mesh inserts for constant air circulation • antibacterial and hydrophobic • moisture absorbent

campy
bike
.com

1. WAISTCOAT C546 | 2. BIB C550 | 3. GLOVE C412 | 4. JERSEY C557 |
5. BIB C193 | 6. GLOVE C015 | 7. OVERSHOES C411







FACTORY TEAM™

To make you feel part of the Campagnolo racing team. Proud to be one of us.

The absolute beauty of a warm summer evening, making you feel special. You're cycling with confidence, light and swift. You and your bicycle. The freedom to move.





windproof • breathable



1. JERSEY C366 | 2. BIB C392 | 3. OVERSHOES C411 |
4. GLOVE C420 | 5. JACKET C362 | 6. BIB C359B

HERITAGE™

For those who want to pedal through history of cycling, and perhaps become part of it.

Clouds everywhere. Uphill there may be snow. You can feel the spirit of the brave. You will never give in. Today the legend is you.





stretchable microfibre • high body temperature control •
perfect moisture absorption • techno lycra ultralight freedom
of movement high muscle containment



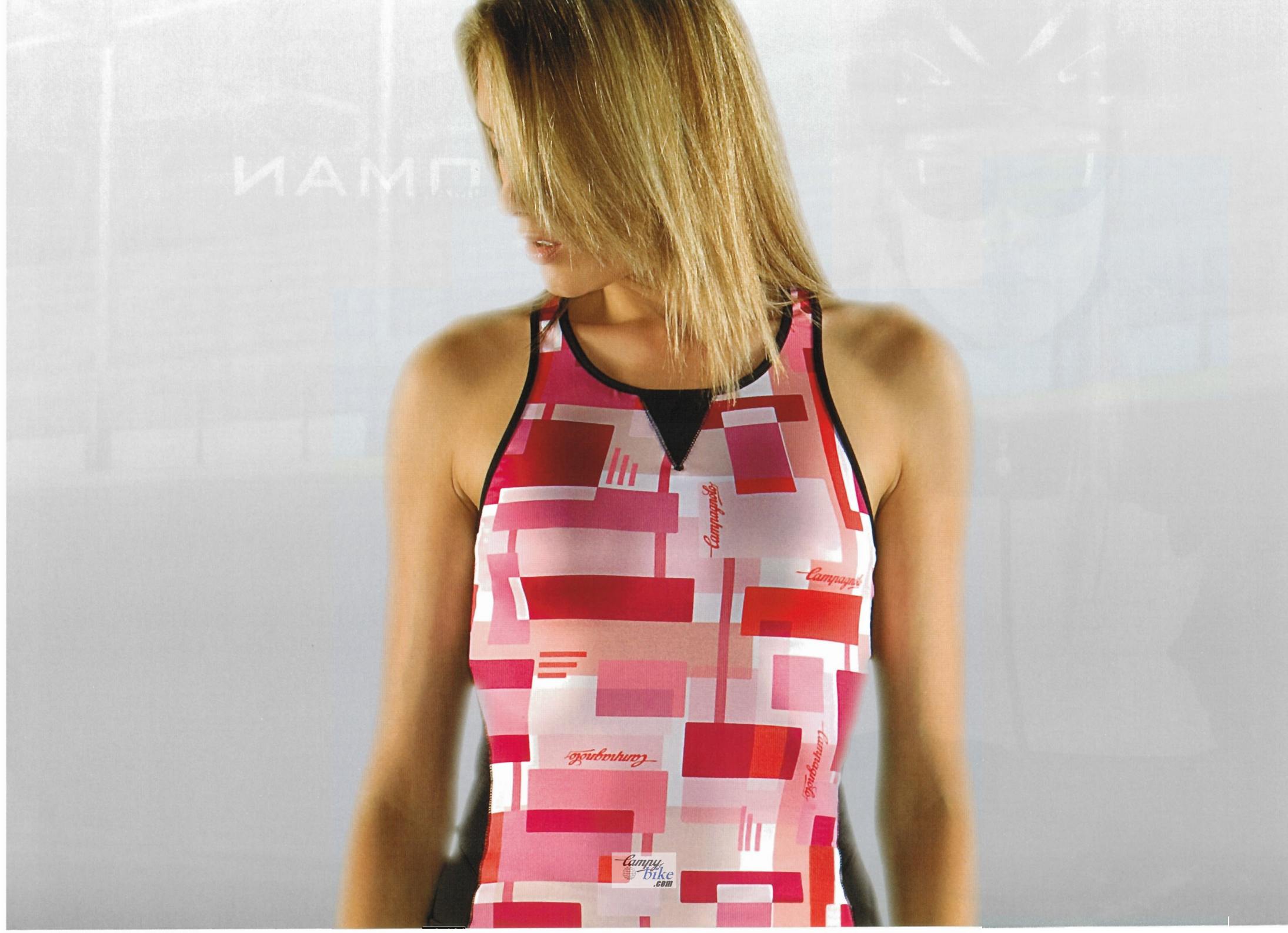
1. JERSEY C813 | 2. BIB C806 | 3. JERSEY C814 | 4. GLOVE C424 | 5. KNEEWARMER C412 | 6. OVERSHOES C411 | 7. GLOVE C015 | 8. PANT C807

WOMEN'S

WOMEN'S RANGE

SPRING SUMMER 2009 COLLECTION

Complete symbiosis between style and performance: garments that enhance femininity, on the toughest of rides or for indoor activity.

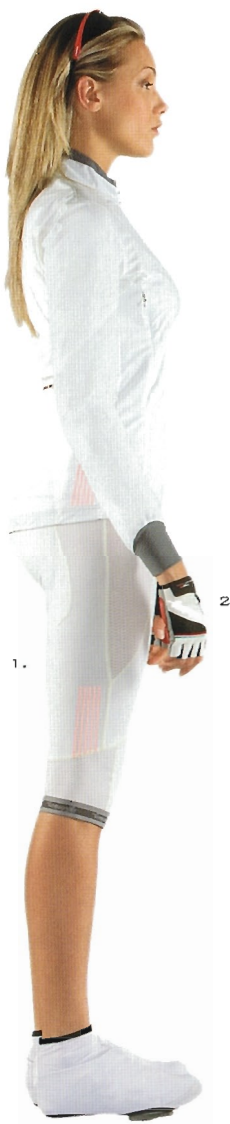




RACING WOMAN

For women who race. In the real sense of the word.

There's something magic in the air.
It may be the sun, it may be the wind.
It is certainly you.
Mile after mile, the endless rise will
become sweeping descent. You're on
your way. Beauty is a fighting spirit.



new generation microfibre • perfect regulation body temperature •
breathable carbon fibre • techno lycra for correct muscle compression
and technical performance • mesh insert for constant air circulation •
high breathability • UV protection

W's WOMEN'S

A perfect look always. With style.

Unpredictable and whimsical, agile
and colourful. Enhance your style,
for the world is yours. A perfect day.
A perfect you.





perfect regulation body temperature • techno lycra
extra light • high breathability • UV protection



1. BODY L205 | 2. GLOVE L404 | 3. OVERSHOES C411 | 4. JERSEY L202 | 5. SHORT SHORT L208 | 6. JERSEY L201 | 7. KNICKERS L206



JERSEY L201 | KNICKERS L206 | GLOVE L404



Cammy
bike
.com

JERSEY L103 | SHORT SHORT L107 | GLOVE C418



MULTISEASON SYSTEM™

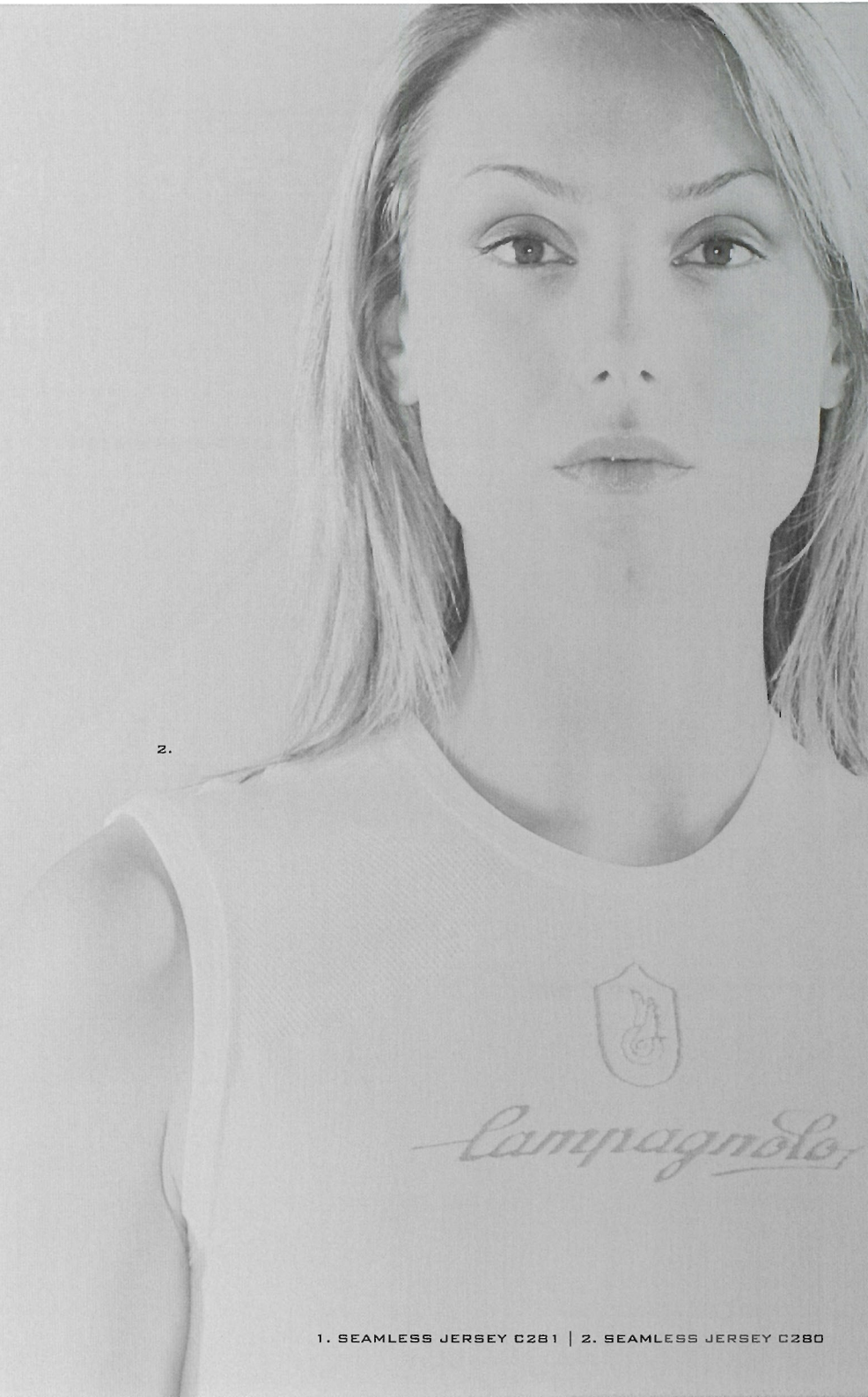


Campagnolo

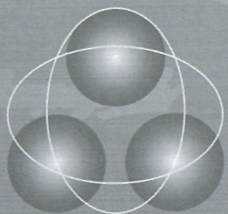
Campy
bike
.com



hydrophobic polypropylene fabric •
excellent breathability • optimal body
temperature control



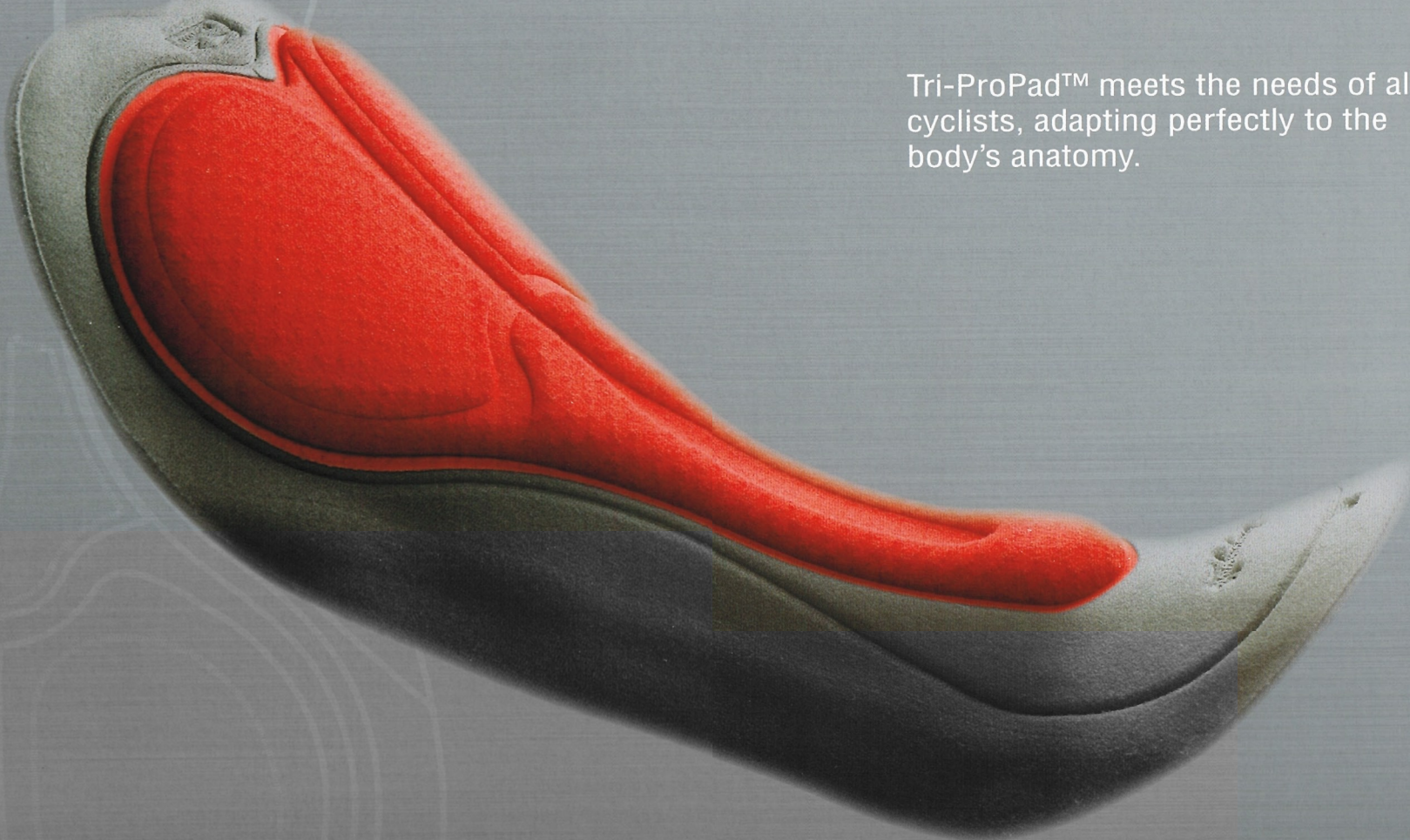
1. SEAMLESS JERSEY C2B1 | 2. SEAMLESS JERSEY C2B0



TRI-PROPAD™

is the pad that completely changes cyclist's performance and comfort in three essential areas.

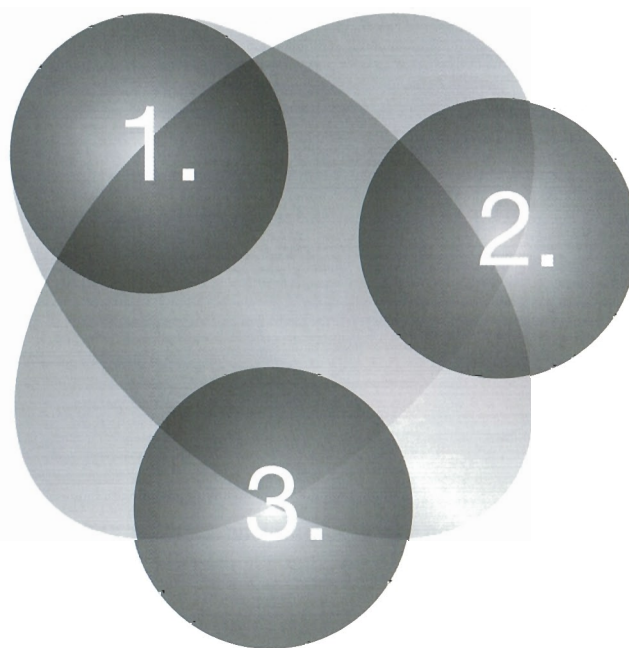
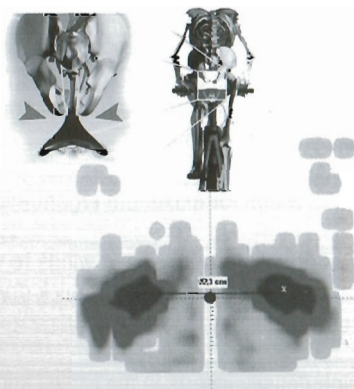
Tri-ProPad™ meets the needs of all cyclists, adapting perfectly to the body's anatomy.



3 essential areas:

ERGONOMICS

It has been developed on a model of the pelvic/femur area resulting from a study of the anthropomorphic characteristics of the cycling population. Over 5000 positions were analysed based on the physical makeup of users.



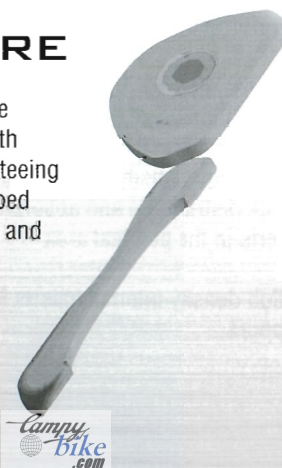
TECHNOLOGY

Simulated study has enabled evaluation of different pressure loads on the saddle to give this pad the best shape and anatomy. Maximum lightness, comfort and perfect adherence to the body are the distinctive features of Tri-ProPad™.



STRUCTURE

Tri-ProPad™ optimises the largest contact surface with minimum volume, guaranteeing maximum levels of absorbed energy and top protection and comfort.



Each version comes in several sizes.

MEN

TRI-PROPAD™ Tech



3 sizes:
M1 (S/M)
M2 (L/XL)
M3 (2XL/3XL)

Men's version specifically for competitions, offering complete protection for the ischial and perineal area and guaranteeing perfect breathability and dry body.

- Preformed wings for maximum ergonomics
- EIT Carbonium fabric in the areas most subject to pressure to ensure high levels of breathability, perfect thermo-regulation and maximum protection against bacteria and static.
- EIT Max fabric for the sides and wings to wick perspiration away fast and ensure quick drying moisture
- Ultra high density inserts in the ischial and perineal area for better shock distribution and absorption.
- High density internal inserts for better comfort and support.

MEN

TRI-PROPAD™ Pro



3 sizes:
M1 (S/M)
M2 (L/XL)
M3 (2XL/3XL)

Men's version specifically for long distances and everyday use, offering complete protection for the ischial and perineal area and guaranteeing perfect breathability and perspiration absorption.

- Preformed wings for maximum ergonomics
- EIT Max fabric for the sides and wings to wick perspiration away fast and ensure quick drying moisture
- Ultra high density inserts in the ischial area for better shock distribution and absorption and high density inserts in the perineal area
- High density internal inserts for better comfort and support.

WOMEN

TRI-PROPAD™ Woman



2 sizes:
W1 (XS/S)
W2 (M/L/XL)

Women's version specifically for competitions and daily use, offering complete protection for the ischial and perineal area and guaranteeing perfect breathability and dry body.

- Preformed wings for maximum ergonomics
- EIT Max fabric for the sides and wings to wick perspiration away fast and ensure quick drying moisture
- Ultra high density inserts in the ischial and perineal area for better shock distribution and absorption.
- High density internal inserts for better comfort and support.

Professional Tri-Pro-technology



BIB C644 | ARMWARMER C412

AGENCIES

ITALY
Campagnolo Sportswear S.R.L.
Via dell'Economia 103
36100 Vicenza - Italy
Phone +39 0444288960
Fax +39 0444289557
info@campagnolosportswear.it

ITALY GERMANY FRANCE AUSTRIA
Campagnolo Sportswear S.R.L.
Via dell'Economia 103
36100 Vicenza - Italy
Phone +39 0444288960
Fax +39 0444289557
info@campagnolosportswear.it

SPAIN
Campagnolo Iberica S.L.
Avda. de Los Huetos 46 Pab. 31
01010 Vitoria - Spain
Phone: +34 945217195
Fax: +34 945217198

EAST EUROPE
Firma Gallizia
10 Oktoberstrasse 7
9800 Spittal/Drau - Austria
Phone +43 47622275
Fax +43 47622275

DISTRIBUTORS

AUSTRALIA
De Grandi Cycle & Sport
419 Moorabool Street
3220 Geelong - Victoria Australia
Phone +61 352215099
Fax +61 352223850

BENELUX
E.R.P.
219 ws. Oosteinderweg
1432 - AS Aalsmeer - Nederland
Phone +31 6 53536896

CANADA
Cycles Marinoni Inc.
1067 Levis Lachenaie
J6W 4L2 Quebec - Canada
Phone +1 4504717133
Fax +1 4504719887

Campione Cycles
1778 West 8th Avenue, Vancouver
BC V6J1V6 - Canada
Phone +1 6048742453
Fax +1 6048742077

DENMARK
Marker Scandinavia APS
Ledreborg Alle 10
4320 Vejre - Denmark
Phone +45 70228075
Fax +45 46498088

FINLAND
Velosport
Mäkelänkatu 9
610 Helsinki - Finland
Phone +358 97571377
Fax +358 9795498

GREECE
Liakos Bicycles
Macedonia 136
54248 Salonica - Greece
Phone +30 2310328782/2310314075
Fax +30 2310328782

ISRAEL
Amit Levinson Ltd
25 Sheshet hayamim Str.
26101 Qiryat Haim P.O.B. 252
Phone +972 48405649
Fax +972 48423913

JAPAN
Nichinao Shokai
6-16-8 Sotokanda Chyodaku
00101 Tokyo - Japan
Phone +81 3 38326251
Fax +81 3 38326266

Kawashima Cycle Supply Corporation
3-3-16 Kitasho-cho, Sakai
590 0007 Osaka - Japan
Phone +81 722381557
Fax +81 722214379

KOREA
OD. Bike Inc.
380-14 Sungnae-Dong, Kangdong-Ku
134-030 Seoul - Korea
Phone +82 24740818
Fax +82 24740656

NEW ZEALAND
Degrandi Cycle & Sport NZ Ltd
19 Nuttall Drive
Hillsborough Christchurch
Phone +64 33891205
Fax +64 33891206

NORWAY
Probike
Tvetenveien 4
0661 Oslo - Norway
Phone +47 22650020
Fax +47 22650021

SWEDEN
Cykel City
Lund, Göteborg
Stockholm - Sweden
www.cykelcity.se

SWITZERLAND
Roy Hinnen Gmbh
Holzhauserstrasse 32
6343 Rotkreuz - Switzerland
Phone +41 417907288
Fax +41 417907286

SINGAPORE
Kian Hong Cycle Pte Ltd
3 Kaki Bukit Road 1
#B1-05 Eunos Technolink
Singapore 415935
Phone + 65 67495787
Fax + 65 67495789

UNITED KINGDOM
Jim Walker & Co.
13 Apex Park - BN27 3 JU Hailsham
East Sussex -UK
Phone +44 8707528777
Fax +44 1323845849

UNITED STATES
Sinclair Imports Inc.
2775 West hwy.40 Verdi
Nevada 89439
Phone +1 8006548052
Fax +1 7753456013